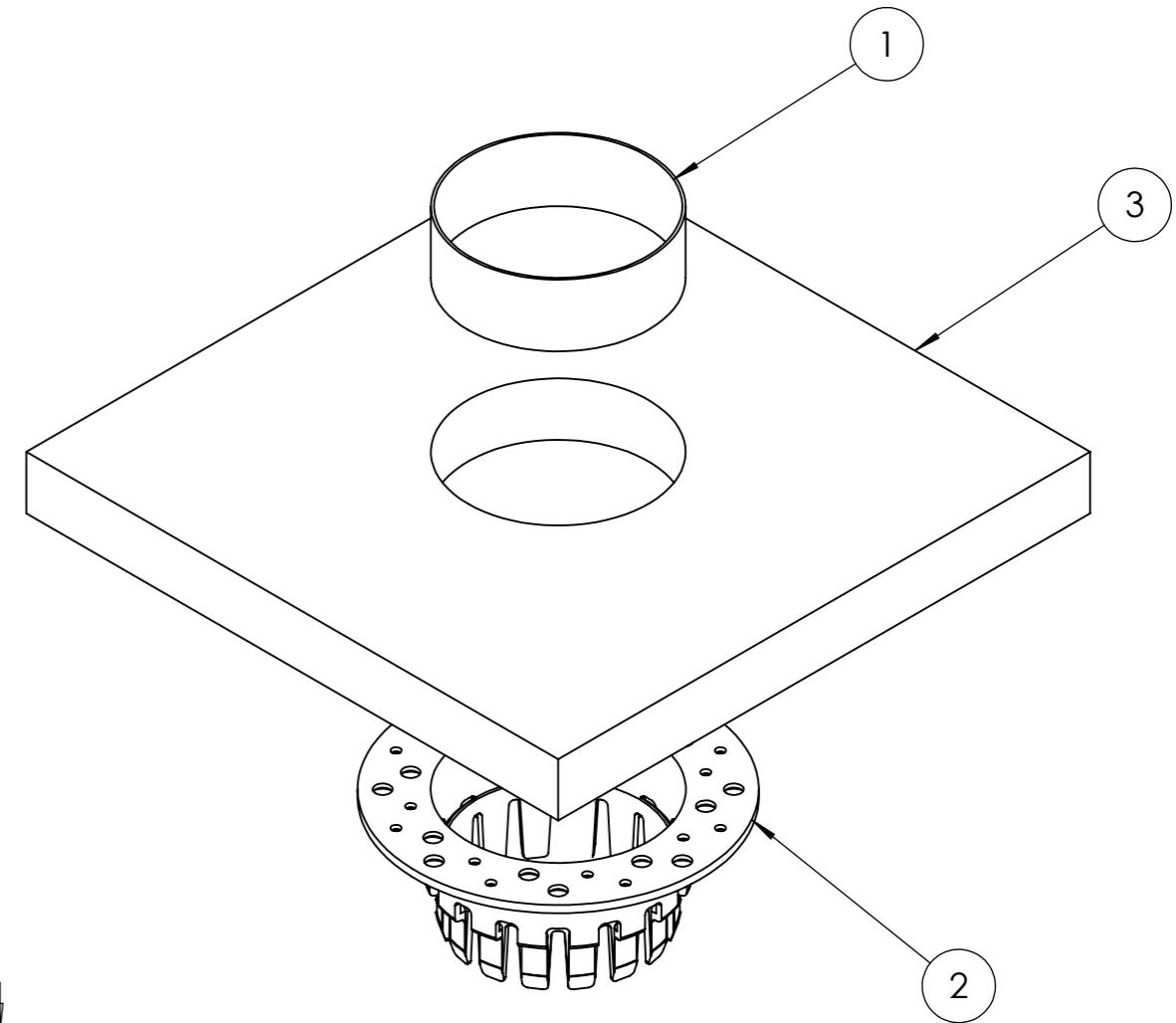
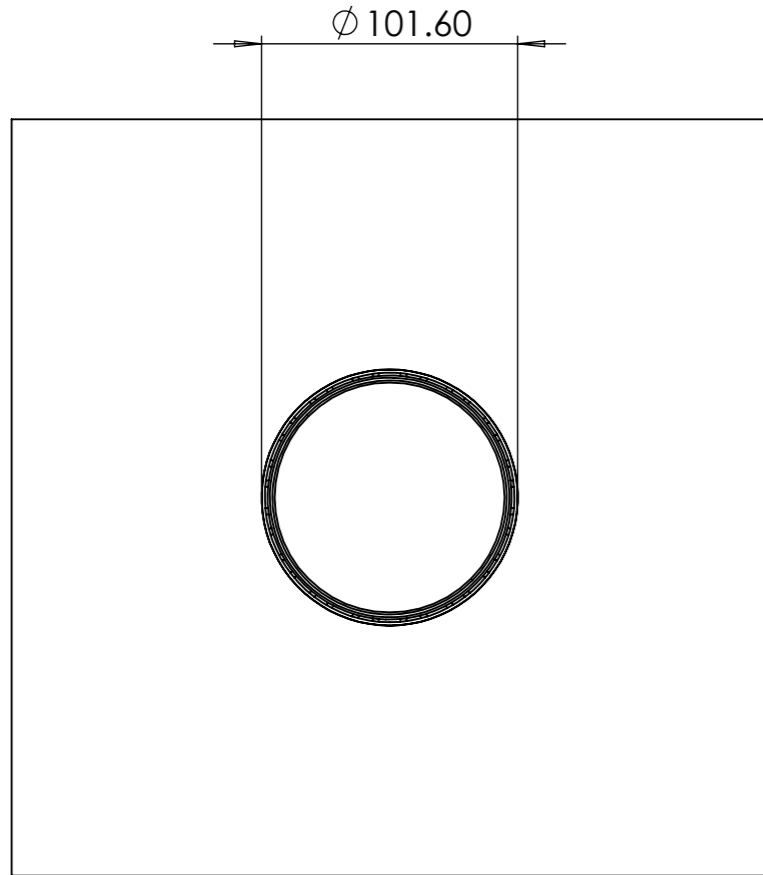
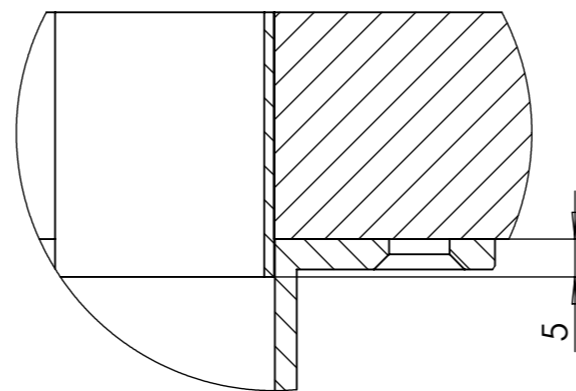


PART LIST	
1	POSITION SLEEVE
2	UNDERMOUNT BRACKET
3	WORKTOP

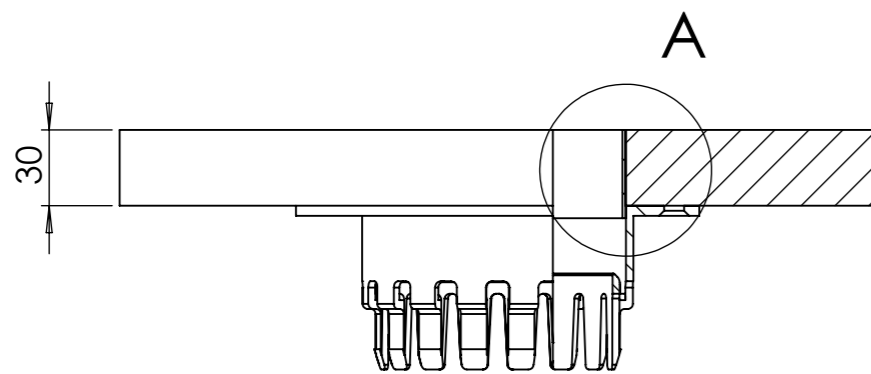


EXPLODED VIEW

- FOR ACCURATE INSTALLATION, THE POSITION SLEEVE MUST BE INSTALLED BEFORE ANY OTHER COMPONENTS. THE WORKTOP HOLE MUST BE
- THE TOP SURFACE OF THE POSITION SLEEVE MUST BE FLUSH WITH THE BENCH TOP SURFACE
- **4 INCHES (101.6MM).**
- WORKTOP THICKNESS **3CM (1 1/4")**



DETAIL A
SCALE 1 : 1



PART NUMBER - DESCRIPTION
BENCH SETUP - US VERSION

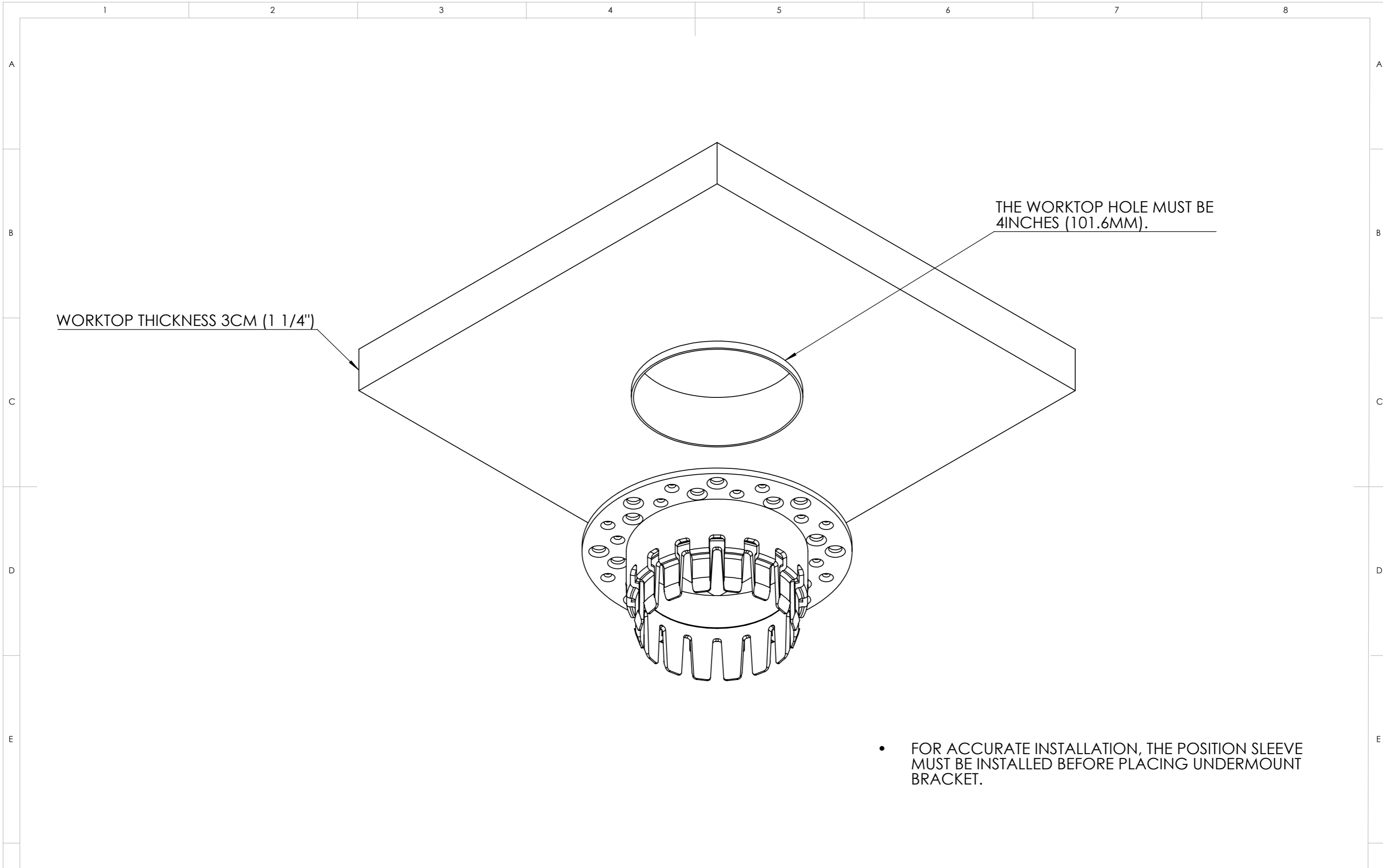
THIRD ANGLE PROJECTION
DO NOT SCALE
FROM DRAWING

MATERIAL:	NOTES:	TOLERANCES:	DRAWN	13/05/2024
MAN. TYPE:		0 TO 6mm: ±0.1 6 TO 25mm: ±0.2 25 TO 100mm: ±0.5 100 TO 500mm: ±1.0 500 AND OVER: 0.4%	CHECKED	
SCALE: 1:3			APPROVED	
WEIGHT:	FINISH:		UNLESS OTHERWISE SPECIFIED: DIMENSIONS ARE IN MILLIMETERS	DEBUR AND BREAK SHARP EDGES A3
				SHEET 1 OF 2

SHAPE LABS

Shape Laboratories Pty Ltd
Level 3, Brisbane Business Hub
155 Queen Street
Brisbane City, QLD 4000
AUSTRALIA | ABN: 24 609 956 210

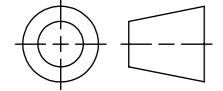
© 2024
ShapeLabs



WORKTOP THICKNESS 3CM (1 1/4")

THE WORKTOP HOLE MUST BE 4INCHES (101.6MM).

- FOR ACCURATE INSTALLATION, THE POSITION SLEEVE MUST BE INSTALLED BEFORE PLACING UNDERMOUNT BRACKET.



THIRD ANGLE PROJECTION
DO NOT SCALE
FROM DRAWING

PART NUMBER - DESCRIPTION
BENCH SETUP - US VERSION

MATERIAL:	NOTES:	TOLERANCES:	DRAWN	13/05/2024
MAN. TYPE:		0 TO 6mm: ±0.1 6 TO 25mm: ±0.2 25 TO 100mm: ±0.5 100 TO 500mm: ±1.0 500 AND OVER: 0.4%	CHECKED	
SCALE: 1:2			APPROVED	
WEIGHT:	FINISH:		UNLESS OTHERWISE SPECIFIED: DIMENSIONS ARE IN MILLIMETERS	DEBUR AND BREAK SHARP EDGES A3
				SHEET 2 OF 2



Shape Laboratories Pty Ltd
Level 3, Brisbane Business Hub
155 Queen Street
Brisbane City, QLD 4000
AUSTRALIA | ABN: 24 609 956 210

© 2024
ShapeLabs