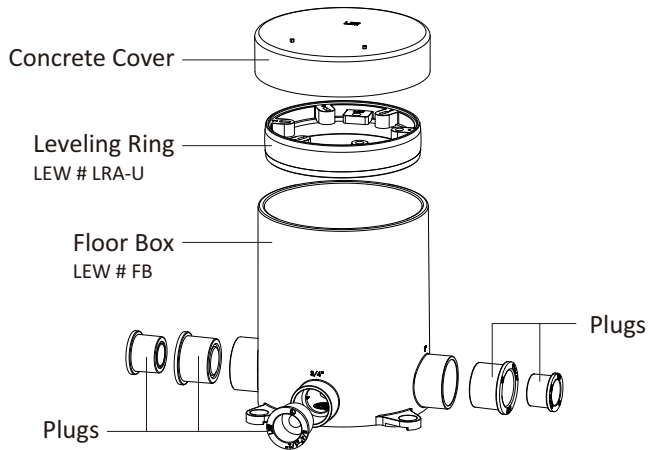


Product Diagram



Tools Requirements

- Phillips screwdriver
- Small ball peen hammer or a blunt punch
- Solvent cement
- Marker
- Ruler
- Hand saw

Components List

- Concrete cover x1
- Leveling ring x1
- Floor box x1
- Plug 1"x3/4" x2
- Plug 3/4"x1/2" x4

Safety Guide

IMPORTANT:

- Read all instructions before installing the floor box kit.

PRIOR TO INSTALLATION:

*****LEW ELECTRIC FITTINGS ACCEPTS NO RESPONSIBILITY IF BELOW CONDITIONS ARE NOT MET/FOLLOWED*****

- Contact a local electrical inspector to make sure that this product meets or exceeds all local electrical codes, as electric codes may vary by location.
- **Risk of Electric Shock or Death.** Ensure to disconnect and turn off all power sources.
- Install leveling ring, covers, and connectors as per supplied instructions.
- Box may extend any distance above finished concrete. Box is cut to exact height with a handsaw.
- Leveling Ring assures a LEVEL top, every time, even if the box is knocked at an angle during the pouring process.

Installation Steps

1. Set floor box on level surface or secure to form with screws at the four pre molded corner holes.

Note: For installations above ground level, the box should be elevated to ensure sufficient concrete support beneath the floor box. (Fig. 1)

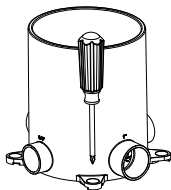


Fig. 1

2. Select the required plugs for installation. Plugs are used to size conduit holes or seal unused ones. For sizing plugs, knock out the membrane cleanly with a ball peen hammer or blunt punch. Apply solvent cement and insert the plugs into the holes. (Fig. 2)

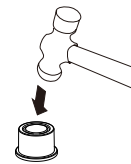


Fig. 2

3. Apply solvent cement to conduit and secure the conduit into the corresponding holes in the box. (Fig.3 & Fig. 4)

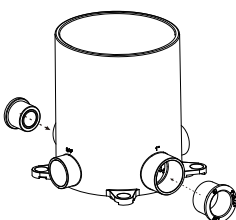


Fig. 3

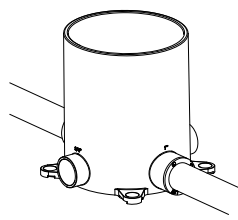


Fig. 4

4. Pull the wiring into the floor box. (Fig.5)

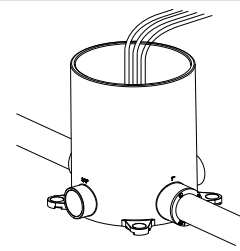


Fig. 5

5. Attach the concrete cover and seal any vacant holes with solvent-cemented plugs provided. (Fig.6)

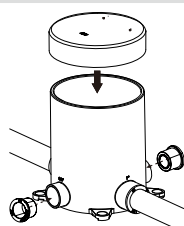


Fig. 6

6. Pour concrete to desired depth. (Fig. 7)

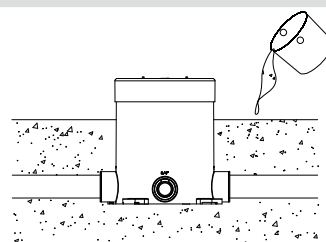


Fig. 7

7. After concrete has set, remove temporary cover. Measure thickness of floor to be applied, and draw a line around the box at this distance from the concrete. Use a hand saw to cut the box along the drawn line. (Fig. 8 & Fig.9)

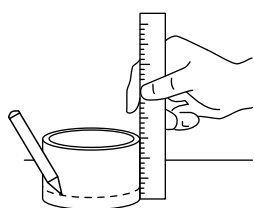


Fig. 8

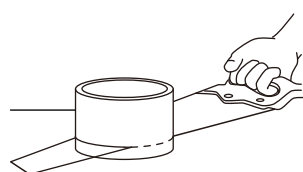


Fig. 9

8. Attach cover assembly (see approved covers below) to leveling ring (part # LRA-U provided when FBLEW is purchased) using screws provided with that cover. Affix wiring in the box to the device (not provided.). (Fig. 10 & Fig.11)

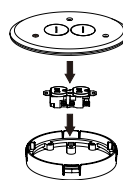


Fig. 10

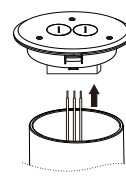


Fig. 11

9. Apply PVC glue to the exterior of the leveling ring and place the cover leveling ring assembly inside floor box and set in place. (Fig. 12 & Fig.13)

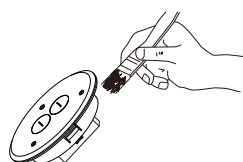


Fig. 12

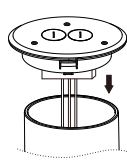


Fig. 13

Note:

- Approved covers for use with LEW part # LRA-U include: PFC series and TCP series covers.
- When using the FB box with our PUPF “pop-up” covers, please use part # PUPF-LRA (sold separately) for the leveling ring instead of part # LRA-U. Follow step #9 for gluing to box.
- When using the FB box with RRFB series covers, use part # RRFB-LRA for the leveling ring instead of part # LRA-U, and refer to the RRFB-CF instructions for guidance.
- The leveling ring adapter is designed to be used with the
by LEW Electric or various other manufacturers to the floor box. The following is a list of known covers that can be attached to this adapter. The holes to be used for mounting are indicated beside each cover manufacturer. Additional covers not listed below may also be compatible with this adapter. To attach covers, use the machine screws supplied with the covers. Follow the installation instructions supplied with the floor box and covers.
- Visit our website at www.lewelectric.com for more information.

It is used to attach brass and plastic floor covers made by LEW Electric or various other manufacturers to the floor box. The following is a list of known covers that can be attached to this adapter. The holes to be used for mounting are indicated beside each cover manufacturer. Additional covers not listed below may also be compatible with this adapter. To attach covers, use the machine screws supplied with the covers. Follow the installation instructions supplied with the floor box and covers.

Manufacturer	Use Hole Number
IPEX/Kraloy	1, 2 & 3
LEW	1, 2 & 3
Hubbell	4, 5 & 6