

DESCRIPTION:
BRASS, SHALLOW, THREE GANG CAST BOX, SEMI ADJUSTABLE

CONCRETE CAP

BRASS, [4] 6-32 X .5 FLAT HEAD
SCREW [1.25 ALSO PROVIDED]

1103-DBE-B

1103-D

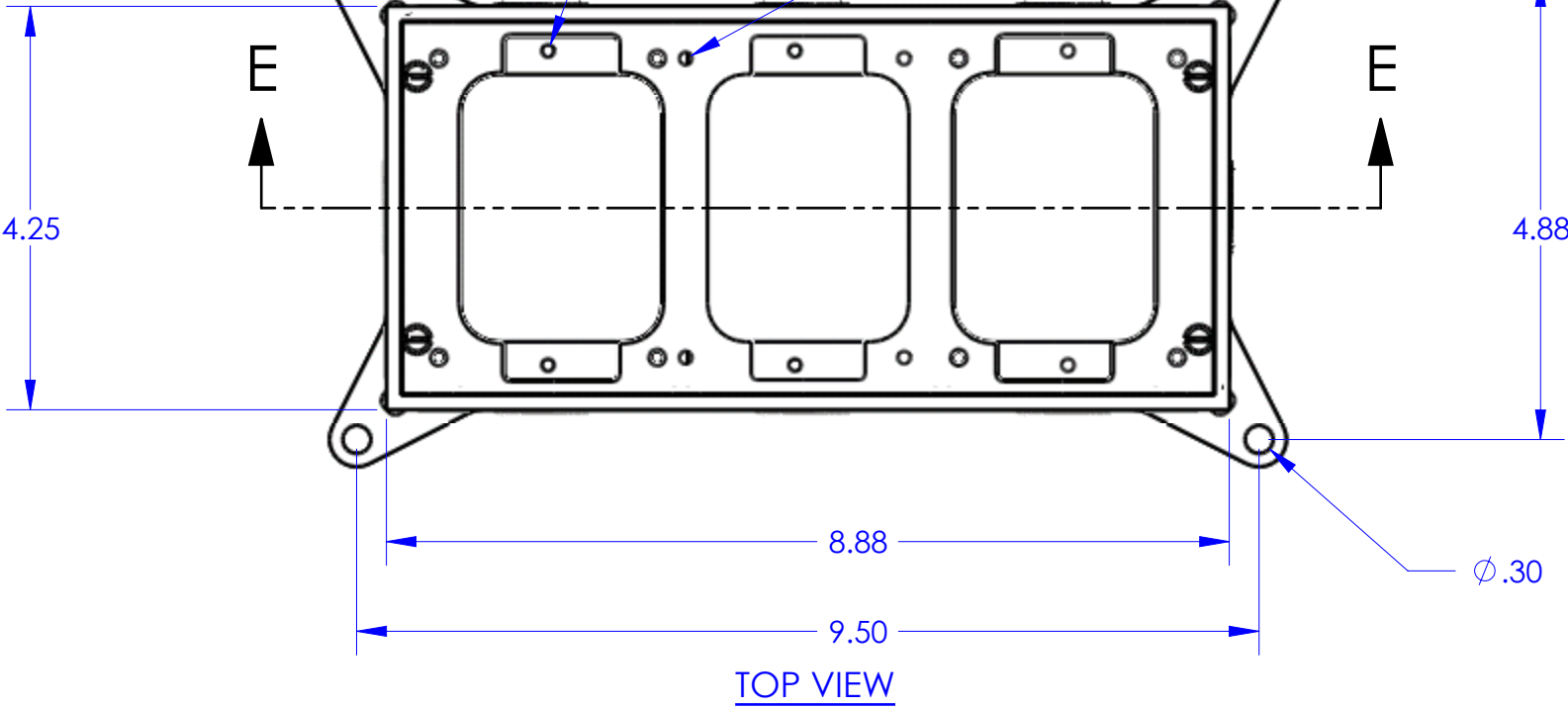
SH-6263-A BOX BODY

3/4 CONDUIT OPENING
[3/4 NPT WITH CAP]

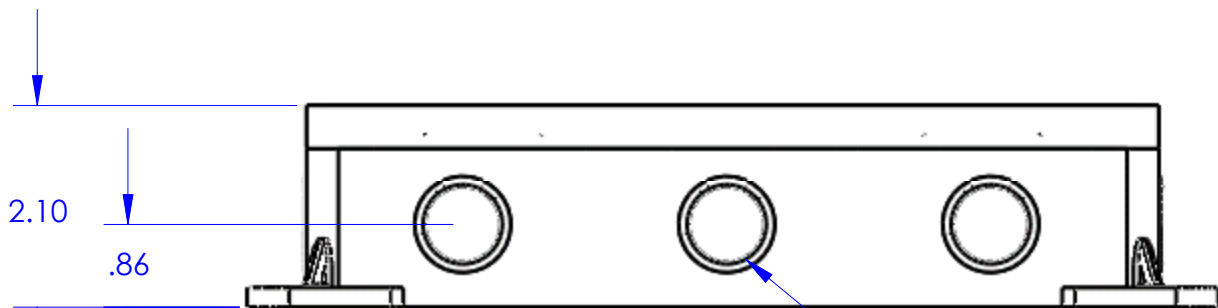
SECTION E-E

4X $\phi .14 \downarrow .49$
8-32 UNC $\downarrow .09$

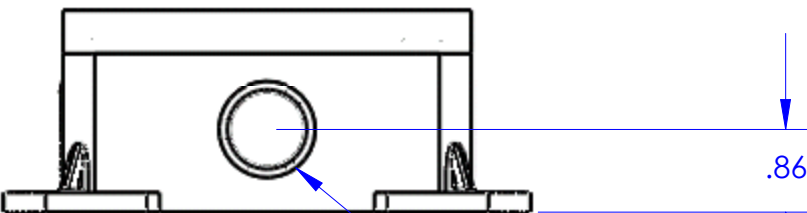
8X $\phi .14 \downarrow .49$
8-32 UNC $\downarrow .15$



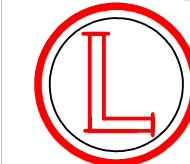
TOP VIEW



FRONT VIEW



RIGHT VIEW



LEW ELECTRIC

FITTINGS COMPANY

SERVING THE ELCTRICAL INDUSTRY SINCE 1901

1801 W. St. Charles Rd. Maywood, IL 60153

PHONE: 708-345-2075

UNLESS OTHERWISE SPECIFIED:	NAME	DATE	TITLE: SH-6263-58
DIMENSIONS ARE IN INCHES	DRAWN	P.J.G.	
TOLERANCES:			
FRACTIONAL: \pm			
ANGULAR: MACH \pm			SIZE DWG. NO. REV A 1001480 A
TWO PLACE DECIMAL \pm			
THREE PLACE DECIMAL \pm			
INTERPRET GEOMETRIC TOLERANCING PER:			
MATERIAL	COMMENTS:		WEIGHT:
FINISH			
DO NOT SCALE DRAWING			SHEET 11 OF 12