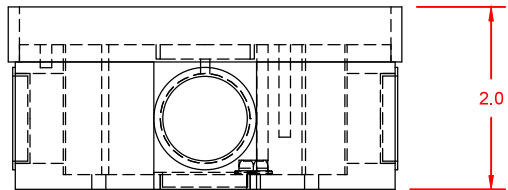
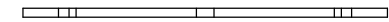
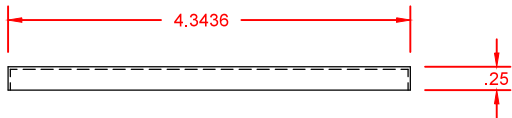
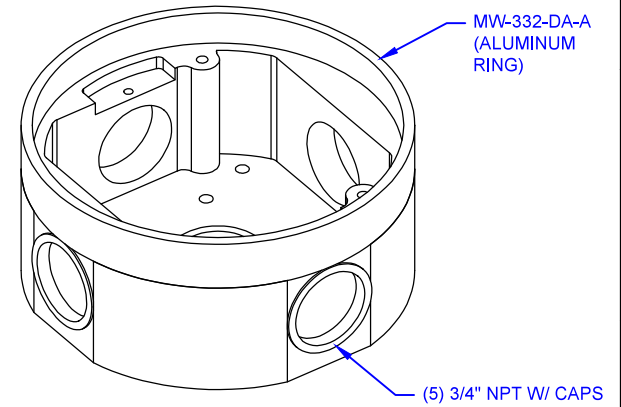
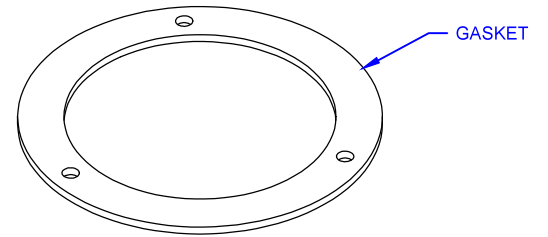
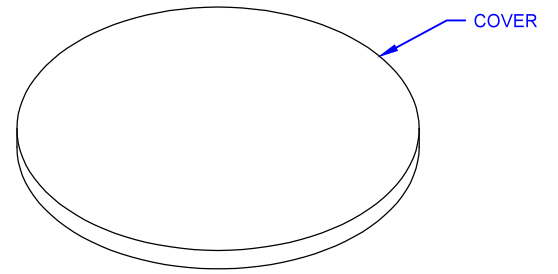
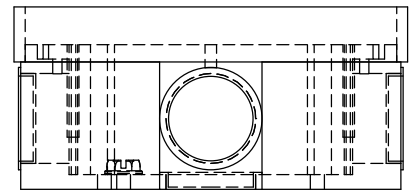
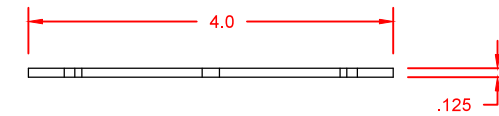
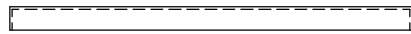


TOP VIEW

ALUMINUM TILE FLANGE, DIE CAST ALUMINUM BODY, SEMI-ADJUSTABLE (FOR CONCRETE CORE DRILL), 13 CU IN INTERIOR CAPACITY.



FRONT VIEW



SIDE VIEW

LEW ELECTRIC FITTINGS COMPANY
 Providing the power to design your vision
 1626 Tobacco Road, Augusta, GA 30906 • PHONE: 877.537.2019

UNLESS OTHERWISE SPECIFIED:		NAME	DATE
DIMENSIONS ARE IN INCHES		DRAWN	SMK 12/14/2025
TOLERANCES		SMK	04/20/2026
FRACTIONAL ±		TITLE: MW-332-DA-A	
ANGULAR: MACH ±		SIZE DWG. NO. 0000001	
TWO PLACE DECIMAL ±		REV A	
THREE PLACE DECIMAL ±		WEIGHT: SHEET 1 OF 1	
INTERPRET GEOMETRIC TOLERANCING PER:		COMMENTS:	
MATERIAL:			
FINISH:			
DO NOT SCALE DRAWING			