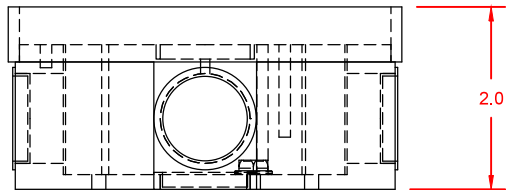
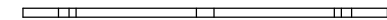
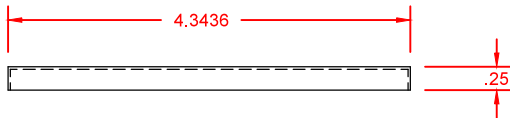
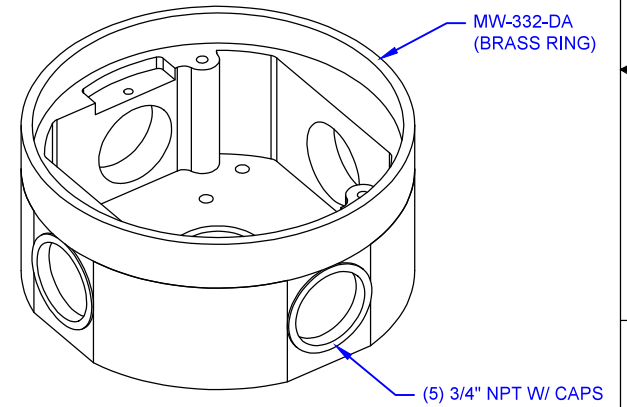
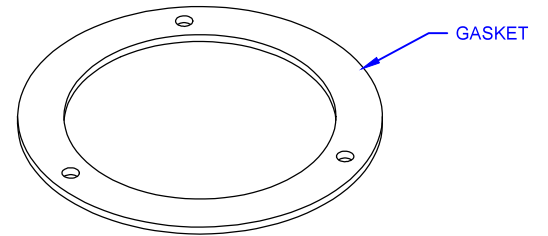
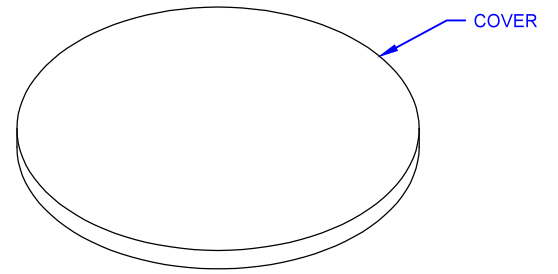
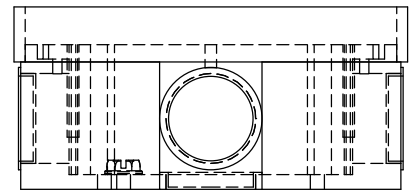
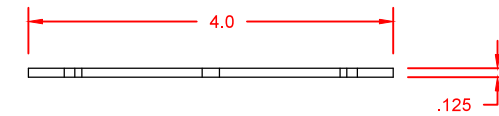
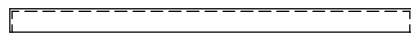


TOP VIEW

BRASS TILE FLANGE, DIE CAST ALUMINUM BODY,  
SEMI-ADJUSTABLE (FOR CONCRETE CORE  
DRILL), 13 CU IN INTERIOR CAPACITY.



FRONT VIEW



SIDE VIEW



1626 Tobacco Road, Augusta, GA 30906 • PHONE: 877.537.2019

UNLESS OTHERWISE SPECIFIED:		NAME	DATE	TITLE:	
DIMENSIONS ARE IN INCHES	DRAWN	SMK	12/14/2025	MW-332-DA	
TOLEANCES		SMK	04/20/2026		
FRACTIONAL: ±				SIZE	DWG. NO.
ANGULAR: INCH ±				A	0000001
TWO PLACE DECIMAL: ±				REV	A
THREE PLACE DECIMAL: ±				WEIGHT:	SHEET 1 OF 1
INTERPRET GEOMETRIC TOLEANCING PER:	COMMENTS:				
MATERIAL:					
FINISH:					
DO NOT SCALE DRAWING					