

1100-DBE

Part numbers/UPC Codes

1101-DBE-B	784149420065
1101-DBE-A	784149420072
1102-DBE-B	784149420089
1102-DBE-A	784149420096
1103-DBE-B	784149420102
1103-DBE-A	784149420119

Description

The Lew Electric 1100-DBE series tile frames are available in 1,2 and 3 gang models. They are made specifically for the 1100 Series of floor boxes and covers. These tile frames have a beautiful metal finish and provide the ability to have a flush finish on a tile or other hard surface floor.

Color Options

- Aluminum
- Brass

Compliance and Certifications

- ETL file #4004534
- Conforms to UL Standard 514D and CSA Standard C22.2 #42



Downloads

[PDF Drawing: 1101-DBE](#)

[DWG Drawing: 1101-DBE](#)

[PDF Drawing: 1102-DBE](#)

[DWG Drawing: 1102-DBE](#)

[PDF Drawing: 1103-DBE](#)

[DWG Drawing: 1103-DBE](#)

Warranty

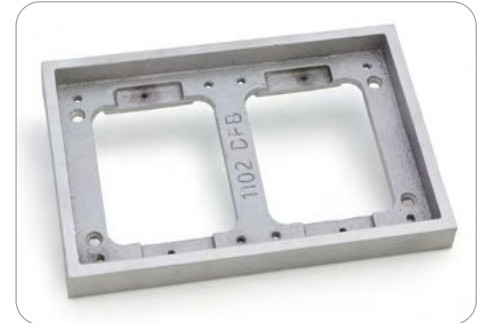
1 YEAR

Country Of Origin

CHINA



1101-DBE-B



1102-DBE-A



1103-DBE-B

1100-DBE

Material Specifications

COVER/FLANGE

Solid Metal

GROUNDING SCREW OR OTHER

Mounting Screws:

1101: (2) $\frac{5}{32}$ x $\frac{3}{8}$ "

1102: (4) $\frac{5}{32}$ x $\frac{3}{8}$ "

1103: (4) $\frac{5}{32}$ x $\frac{3}{8}$ "

GASKET

Cork

Mechanical Specifications

DIMENSIONS

• 1101: 4.3" x 3.3"

• 1102: 6.3" x 4.3"

• 1103: 9.2" x 4.2"

• Height: $\frac{5}{8}$ "

Product Features

APPLICATION SELECTOR

Commercial

PRODUCT TYPE

Tile Frame

PLUG CONNECTION TYPE

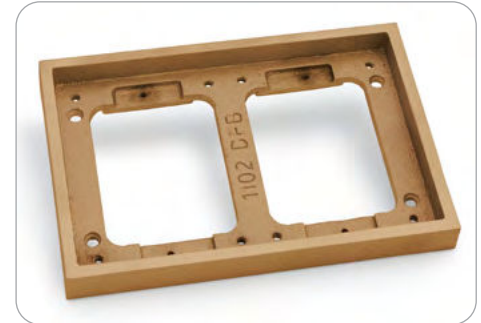
Surface

FINISH FLOOR TYPE

Tile



1101-DBE-A



1102-DBE-B



1103-DBE-A