

CF Series

Part numbers/UPC Codes

CF-1101-DFB	784149211724
CF-1101-DFB-A	784149002001
CF-1102-DFB	784149211755
CF-1102-DFB-A	784149002018
CF-1103-DFB	784149211786
CF-1103-DFB-A	784149002025

Description

The Lew Electric CF series carpet flanges are available in 1,2 and 3 gang models. Made specifically for the 1100 Series of floor boxes and covers these flanges have a beautiful metal finish and will add an elegant look in a carpeted room. The flanges add 3/8" to the top of the box being used to accommodate for carpet and padding. The flanges hang over the sides of the 1100 series box by 1.04" and mounting plate attachment screws are included.

Color Options

- Aluminum
- Brass

Compliance and Certifications

- ETL file #4004534
- Conforms to UL Standard 514D and CSA Standard C22.2 #42



Downloads

[PDF Drawing: CF-1101-DFB](#)
[DWG Drawing: CF-1101-DFB](#)

[PDF Drawing: CF-1102-DFB](#)
[DWG Drawing: CF-1102-DFB](#)

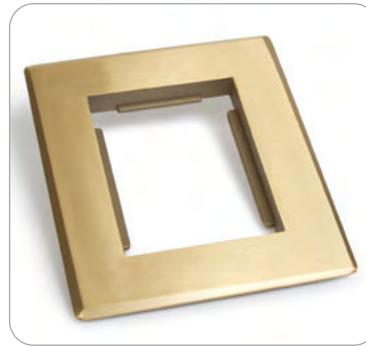
[PDF Drawing: CF-1103-DFB](#)
[DWG Drawing: CF-1103-DFB](#)

Warranty

1 YEAR

Country Of Origin

CHINA



CF-1101-DFB



CF-1102-DFB-A



CF-1103-DFB

CF Series

Material Specifications

COVER/FLANGE

Solid Metal

GROUNDING SCREW OR OTHER

Mounting Screws:

CF1101: (4) $\frac{8}{32}$ x $1\frac{1}{4}$ "

CF1102: (8) $\frac{8}{32}$ x $1\frac{1}{4}$ "

CF1103: (12) $\frac{8}{32}$ x $1\frac{1}{4}$ "

Mechanical Specifications

DIMENSIONS

• CF1101: 6.25" x 5.33"

• CF1102: 8.25" x 6.25"

• CF1103: 11.25" x 6.25"

Product Features

APPLICATION SELECTOR

Commercial

PRODUCT TYPE

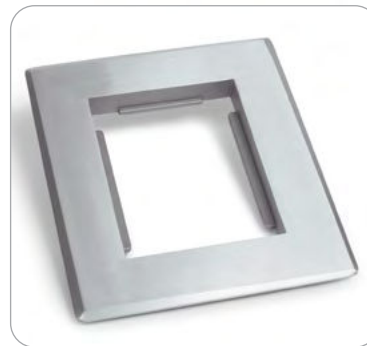
Flange

PLUG CONNECTION TYPE

Surface

FINISH FLOOR TYPE

Carpet



CF-1101-DFB-A



CF-1102-DFB



CF-1103-DFB-A