

### OB-1

#### Part numbers/UPC Codes

OB-1-SP	784149610015
OB-1-SP-6 PORT	784149610039

#### Description

The Lew Electric OB-1-SP outdoor concrete floor box is engineered for durable, all-weather performance, making it the perfect solution for reliable outdoor power access year-round. Built to withstand the toughest environmental conditions, the OB-1 provides a robust, long-lasting floor power solution for patios, courtyards, sports facilities, and other outdoor spaces. The OB-1 features a #316 stainless steel cover for superior corrosion resistance and enhanced strength at high temperatures. Each unit comes complete with a 20-amp GFCI tamper and weather-resistant duplex receptacle, waterproof gaskets and connectors, a heavy-duty PVC box, an extension ring for deep concrete pours, and four leveling screws for precise installation. The OB-1 is gangable and achieves an IP66 rating when closed, ensuring maximum protection against dust and water intrusion.

**Note:** *These units are not designed for roof top locations.  
 Each unit must be tied to a dedicated GFCI breaker.*

#### Compliance and Certifications

Intertek IP66 rated (closed position)  
 Receptacle: GFI-UL listed #E473428

#### Downloads

- [Installation Instructions](#)
- [Installation Video](#)
- [PDF Drawing: OB-1-SP](#)
- [DWG Drawing: OB-1-SP](#)
- [PDF Drawing: OB-1-SP-6PORT](#)
- [DWG Drawing: OB-1-SP-6PORT](#)

#### Warranty

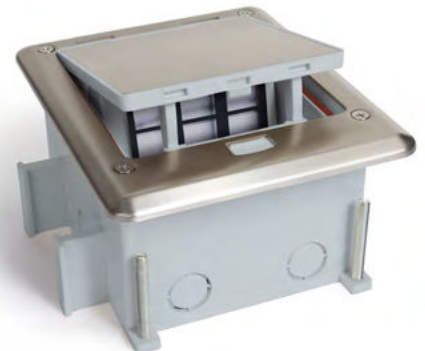
1 YEAR

#### Country Of Origin

CHINA



OB-1-SP



OB-1-SP-6 PORT



### OB-1

#### Material Specifications

##### BOX/HOUSING

Plastic

##### COVER/FLANGE

Solid Metal

##### GROUNDING SCREW OR OTHER

- Mounting Screws: (4) M4 x 3 1/2", (4) M4 x 2", (4) M4 x 1", (4) 9/32 x 1/2"
- Adjustment Sleeve: Plastic
- F-Connector: 3
- Watertight Close Up Plugs: 3
- Male to Female Connector
- Concrete Cap: Plastic

##### GASKET

Neoprene

#### Mechanical Specifications

##### CONDUIT SELECTIONS

- (6) 7/8" sides
- (4) 7/8" bottom

##### DIMENSIONS

- Cover Dimensions: 6 7/8" x 5 1/16"
- Height with extension ring: 6.5"
- Height w/o extension ring: 3.375"
- Box Dimensions: 5.25" x 4.75"

##### MIN. DEPTH OF POUR

4"

#### Electrical Specifications

##### RECEPTACLE(S) TYPE

Duplex 20A GFCI

##### OTHER

- 6 PORT Version includes 6-port Low Volt Device only
- Includes waterproof electrical connectors

#### Product Features

##### APPLICATION SELECTOR

Outdoor

##### PRODUCT TYPE

Floor Box

##### SERVICE CAPACITY

Single

##### PLUG CONNECTION TYPE

Above Surface

##### OTHER

- IP66 rated (in closed position)
- Made from stainless steel #316
- Includes extension ring for deep pours

##### BOX CAPACITY

1 GANG

