

RRP-2-LR-T

Part numbers/UPC Codes

RRP-2-LR-T	784149400197
RRP-2-LR-A-T	784149400211
RRP-2-LR-DB-T	784149408803

Description

The Lew Electric RRP-2-LR-T series is a drop in style floor plate assembly (no box) with a metal dual flip lid cover and a Lew RRP-2-PQ quad port Comm./Data device. A neoprene gasket surrounds the underside of the cover, preventing spills from accessing the receptacle. The cover features two watertight flip lids and the included adjusting sleeve helps accommodate installation in finished floor depths up to ¾" when paired with a standard single gang outlet box (not included).

Color Options

- Aluminum
- Brass
- Dark Bronze

Compliance and Certifications

N/A

Downloads

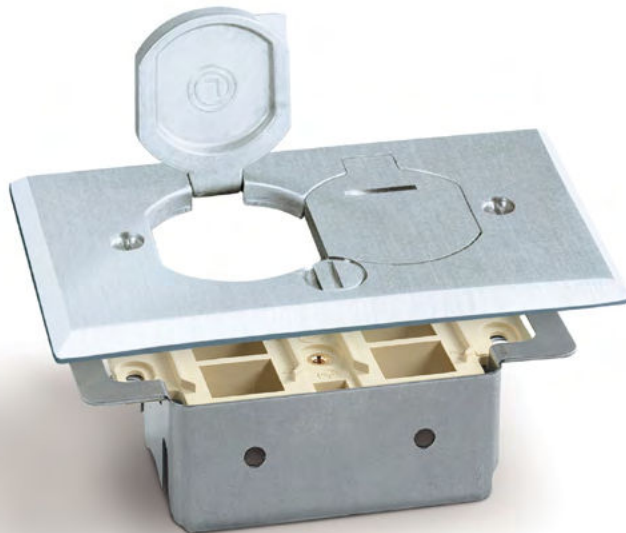
- [Installation Instructions](#)
- [PDF Drawing](#)
- [DWG Drawing](#)

Warranty

1 YEAR

Country Of Origin

CHINA



Brass (RRP-2-LR-T)



Aluminum (RRP-2-LR-A-T)



Dark Bronze (RRP-2-LR-DB-T)

RRP-2-LR-T

Material Specifications

COVER/FLANGE

Painted or Solid Metal

GROUNDING SCREW OR OTHER

- Adjustment Sleeve: Stamped Steel
- Mounting Screws: (2) 6/32 x 1 1/4", (2) 6/32 x 3/4"

GASKET

Neoprene

Mechanical Specifications

DIMENSIONS

- Cover Dimensions: 4.5" x 2.75"
- Height: 1.5"

Electrical Specifications

OTHER

Includes 1 Quad Port Low Volt Device

Product Features

APPLICATION SELECTOR

Residential

PRODUCT TYPE

Top Assembly

SERVICE CAPACITY

Single

PLUG CONNECTION TYPE

Surface

OTHER

- Fits any manufacturers 3 1/2" deep switch box
- Watertight assembly
- Adjustable up to 3/4"
- For subfloor application

FINISH FLOOR TYPE

- Carpet
- Tile
- Wood

BOX CAPACITY

1 GANG

