

RRP-2-T

Part numbers/UPC Codes

RRP-2-T	784149002568
RRP-2-A-T	784149400173
RRP-2-DB-T	784149408773
RRP-2-NS-T	784149212745

Description

The Lew Electric RRP-2-T series is a drop in style floor plate assembly (no box) with a brass screw plug cover and a Lew RRP-2-QP quad port Comm./Data device. A neoprene gasket surrounds the underside of the cover, preventing spills from accessing the receptacle. The cover features two 1 ¼" watertight close up plugs and the included adjusting sleeve helps accommodate installation in finished floor depths up to ¾" when paired with a standard single gang outlet box (not included).

Color Options

- Aluminum
- Brass
- Dark Bronze
- Nickel

Compliance and Certifications

N/A

Downloads

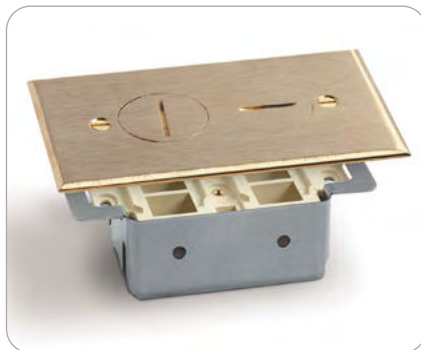
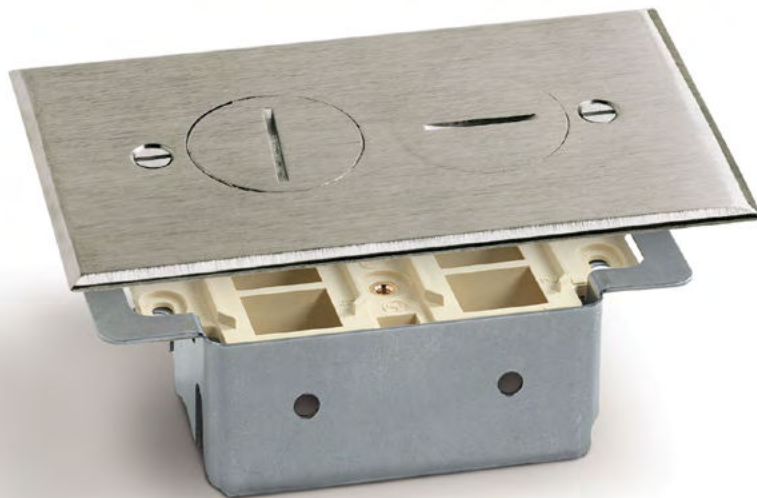
- [Installation Instructions](#)
- [PDF Drawing](#)
- [DWG Drawing](#)

Warranty

1 YEAR

Country Of Origin

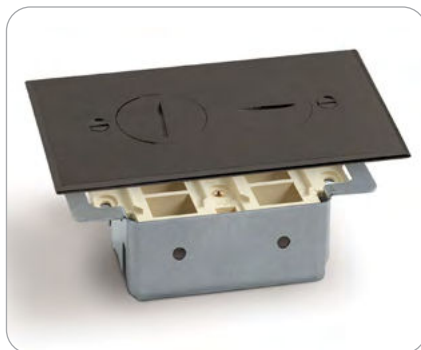
CHINA



Brass (RRP-2-T)



Aluminum (RRP-2-A-T)



Dark Bronze (RRP-2-DB-T)



Nickel (RRP-2-NS-T)

RRP-2-T

Material Specifications

COVER/FLANGE

Painted or Solid Metal

GROUNDING SCREW OR OTHER

- Adjustment Sleeve: Stamped Steel
- Mounting Screws: (2) $\frac{9}{32}$ x $1\frac{1}{4}$ ", (2) $\frac{9}{32}$ x $\frac{3}{4}$ "

GASKET

Neoprene

Mechanical Specifications

DIMENSIONS

- Cover Dimensions: 4.5" x 2.75"
- Height: 1.5"

Electrical Specifications

OTHER

Includes 1 Quad Port Low Volt Device

Product Features

APPLICATION SELECTOR

Residential

PRODUCT TYPE

Top Assembly

SERVICE CAPACITY

Single

PLUG CONNECTION TYPE

Surface

OTHER

- Fits any manufacturers $3\frac{1}{2}$ " deep switch box
- Watertight assembly
- Adjustable up to $\frac{3}{4}$ "
- For subfloor application

FINISH FLOOR TYPE

- Carpet
- Tile
- Wood

BOX CAPACITY

1 GANG

