

SWB-2-LR-T

Part numbers/UPC Codes

SWB-2-LR-T	784149400258
SWB-2-LR-A-T	784149400272
SWB-2-LR-DB-T	784149408896

Description

The Lew Electric SWB-2-LR-T series is a drop in style floor box with a metal dual flip lid cover, single gang stamped steel box and adjusting sleeve. Inside the floor box is a LEW RRP-2-PQ quad port device (for Comm./Data applications) attached to a mounting plate with a watertight gasket surrounding the receptacle.

A second neoprene gasket surrounds the underside of the cover, preventing spills from accessing the receptacle. The cover features two watertight flip lids.

The stamped steel box is also UL listed and is designed for subfloor installation. The included adjusting sleeves go inside the box to accommodate installation in finished floor depths up to 3/4".

Color Options

- Aluminum
- Brass
- Dark Bronze

Compliance and Certifications

UL & NEMA RECOGNITION

- Box UL #E345966
- Meets NEMA WD1-1983 heavy duty requirement for display receptacle

Downloads

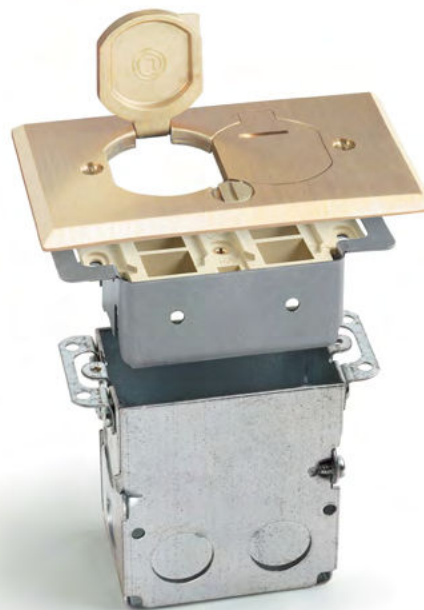
- [Installation Instructions](#)
- [PDF Drawing](#)
- [DWG Drawing](#)

Warranty

1 YEAR

Country Of Origin

CHINA



Brass (SWB-2-LR-T)



Aluminum (SWB-2-LR-A-T)



Dark Bronze (SWB-2-LR-DB-T)

SWB-2-LR-T

Material Specifications

BOX/HOUSING

Stamped Steel

COVER/FLANGE

Painted or Solid Metal

GROUNDING SCREW OR OTHER

- Adjustment Sleeve: Stamped Steel
- Mounting Screws: (2) $\frac{9}{32}$ x $1\frac{1}{4}$ ", (2) $\frac{9}{32}$ x $\frac{3}{4}$ "

GASKET

Neoprene

Mechanical Specifications

CONDUIT SELECTIONS

- (6) $\frac{1}{2}$ " sides
- (2) $\frac{1}{2}$ " bottom

CUBIC INCH CAPACITY

18 cu. in.

DIMENSIONS

- Cover Dimensions: 4.5" x 2.75"
- Height: 4.27"

Electrical Specifications

RECEPTACLE(S) TYPE

OTHER

Includes 1 Quad Port Low Volt Device

Product Features

APPLICATION SELECTOR

Residential

PRODUCT TYPE

Floor Box

SERVICE CAPACITY

Single

PLUG CONNECTION TYPE

Surface

OTHER

- Watertight assembly
- Adjustable up to $\frac{3}{4}$ "
- For subfloor application

FINISH FLOOR TYPE

- Carpet
- Tile
- Wood

BOX CAPACITY

1 GANG

